

## 注册步骤

### Sign up in 3 steps

#### 1. 下载 Download

在应用商店搜索 PopOn School 完成下载, 也可以扫描下方二维码下载。

Search for PopOn School in any app stores (like Google etc.), and download the app.

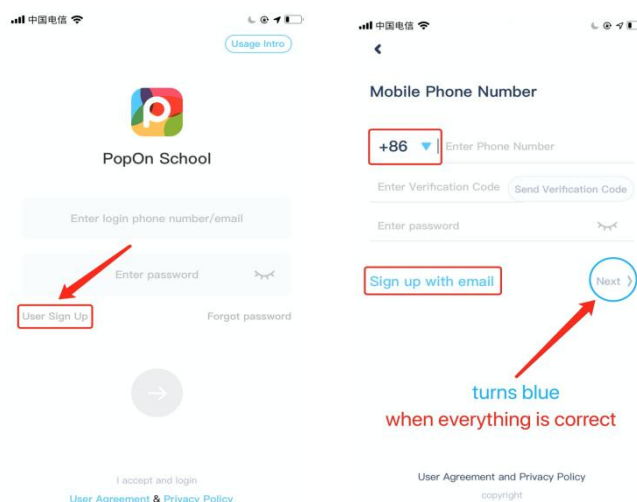
Or you can also scan the QR code below to download directly.



#### 2. 注册 Sign up

在 PopOn School 首页进行注册, 你可以选择用手机号或者邮箱来完成。如果你选择用手机号注册账号, 请记得选择国际电话区号(如: 澳大利亚: +61)。

Sign up with a mobile phone number or email. If you choose to register with your mobile phone number, please remember to choose your country code (like Australia: +61)



Contact PopOn School

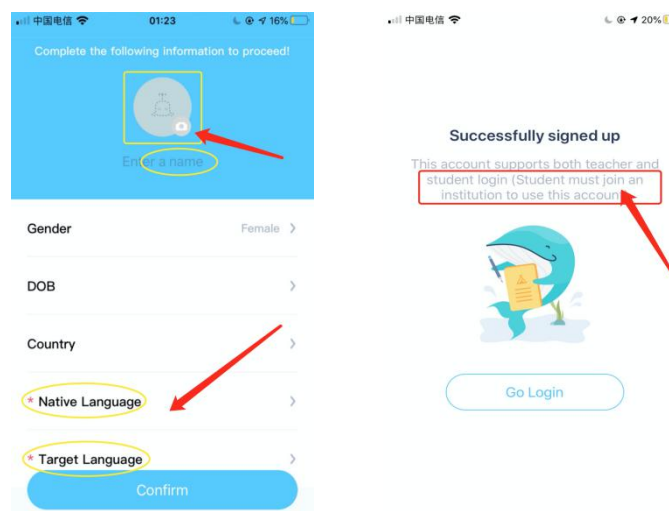
wordoor\_tech

fiona@wordoor.cn

### 3. 完善个人信息 Create an Account Profile

以下信息为必填项: 头像、昵称(使用学号)、母语(如无您的母语选项,建议勾选英语)、目的语(中文), **为了便于分班, 首次登录请您务必使用学号作为您的用户名。**

The following information are required: **avatar**, **nickname (student number)**, **native language** (if your native language option isn't listed, it is recommended to select English), **target language** (select Chinese) . **For the consideration of class placement, please be sure to use your student number as your user-name for the first login.**



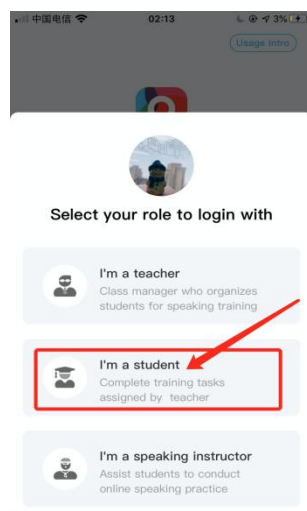
## 入班步骤

### Enroll within 3 steps

#### 1. 登录 Log in

选择“我是学生”登录。

Log in as the role of a student.



Contact PopOn School



wordoor\_tech



fiona@wordoor.cn

## 2. 输入邀请码 Enter invitation code

输入上外进修班的班级邀请码【752713】。

Enter the class invitation code of the Chinese Language Programme. And the code is 752713.

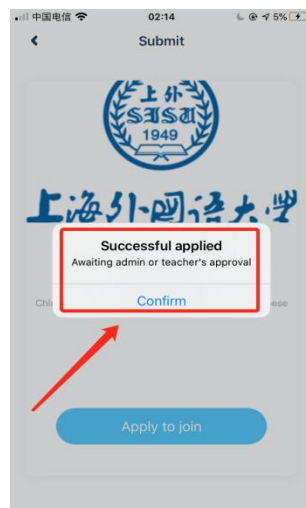


## 3. 等待审核 Verify

等待上外机构审核通过即可。

Just wait for the approval from SISU, and it takes up to 1 day to verify.

Once confirmed, you can log in again as the role of a student.



### 备注: Note

我们将于2月最后一周安排直播测试课, 正式直播课上课时间为3月2日, 建议您开启PopOn School 通知权限, 届时SISU会有相关信息在PopOn School内作出通知。

We will arrange live trial lessons in the last week of February. The official live lessons will take place on 2<sup>nd</sup> March. It is recommended that you grant permission to the app in order to receive notifications related to the class from SISU.



Contact PopOn School

wordoor\_tech

fiona@wordoor.cn